

**Specifications:**

- Current Rating: 3A
- Contact Resistance: 20mΩ Max
- Withstand Voltage: 500V AC
- Insulation Resistance: 1000MΩ Min
- Operation Temperature: -40°C ~ +105°C

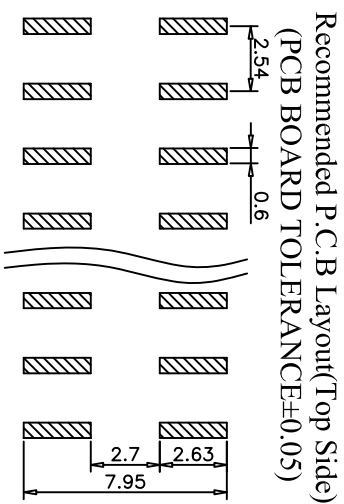
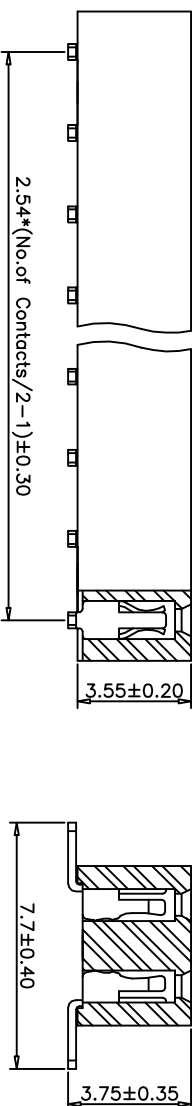
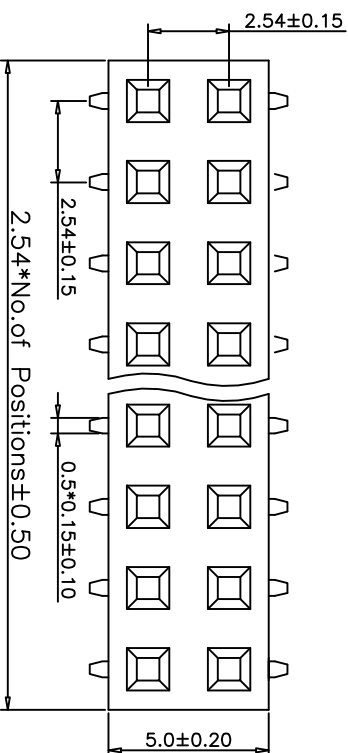
**Material:**

- Contact Material: Phosphor Bronze
- Finish: Gold Flash All Over Nickel
- Insulator Material: PA6T(Ul94V-0)

**Ordering Information**

BT2135 2 \* \* \* I 3 A03

2=Dual Row      No. of Pins      Contact Plating      Insulation & Packing      Contact Shape  
 04-80P      U=Gold Flash      I=PA6T+Tray      3=SMWT  
 X=10u" Gold



REV	DATE	MODIFICATION DESCRIPTION	CHANGE	APPROVE	OPERATION		DRAW	Qizhi rong	09/06/18	SCALE	UNIT		SHEET	PART NO.	TITLE:
					Angle	± 3'					APPROVE	CK			
A0	09/06/18	NEW			X.X	±0.45	DESIGN			-	mm	A4	1/1	BT21352***13A03	PH2.54mm Dual Row SMT DIP:7.7mm
					X.XX	±0.30	CHECK	Yalin							
					X.XXX	±0.20									
					DIM	TOL									



**Specifications:**

- Current Rating: 3A
- Contact Resistance: 20mΩ Max
- Withstand Voltage: 500V AC
- Insulation Resistance: 1000MΩ Min
- Operation Temperature: -40°C ~ +105°C

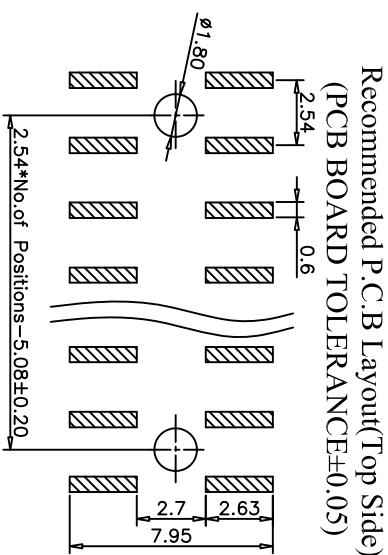
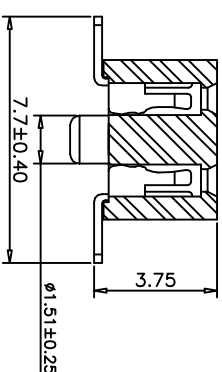
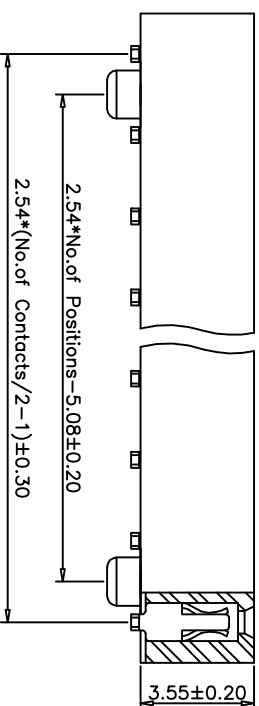
**Material:**

- Contact Material: Phosphor Bronze
- Finish: Gold Flash All Over Nickel
- Insulator Material: PA6T(UL94V-0)

**Ordering Information**

BT2135 2 \* \* \* I 4 A03

2=Dual Row      No. of Pins      Contact Plating      Insulation & Packing      Contact Shape  
 04-80P      U=Gold Flash      I=PA6T+Tray      4= SMT(With Post)



REV	DATE	MODIFICATION DESCRIPTION	CHANGE	APPROVE	OPERATION		DRAW	SCALE		PART NO.
					Angle	TOL		UNIT	SHEET	
A0	09/06/18	NEW			X.X	±0.45	Qizhi rong	mm	1/1	BT21352**14A03
					X.XX	±0.30	DESIGN	A4		
					X.XXX	±0.20	CHECK			
					Angle	± 3'	APPROVE			
					DIM	TOL	CK			



PH2.54mm Dual Row SMT DIP: 7.7mm With Post